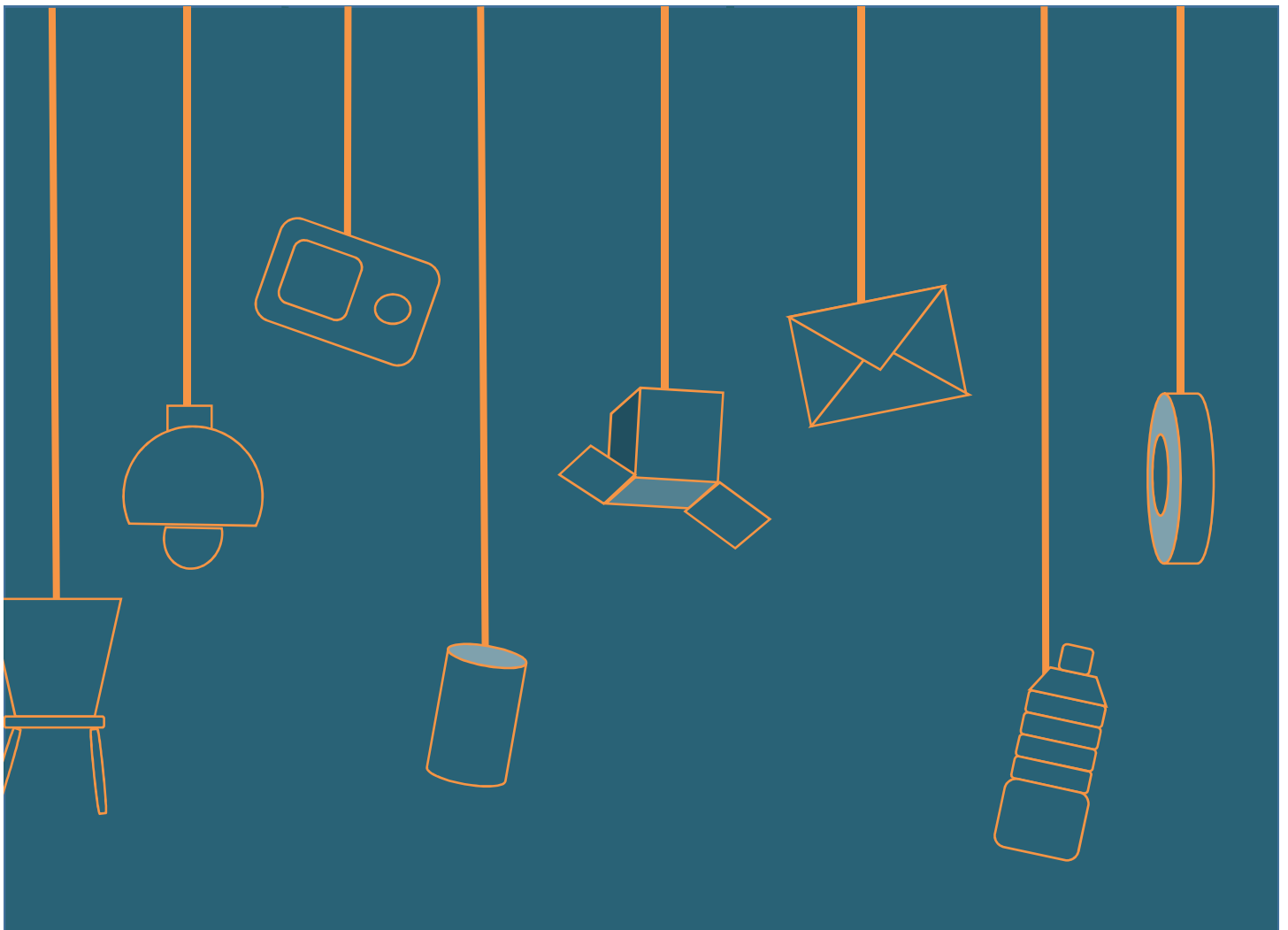


# University of Oxford

## Non-hazardous waste guide



The University of Oxford is committed to reducing its impact on the environment by preventing, reducing and recycling more of its waste.

Every staff member and student affects the amount of waste produced and the University's recycling rate.



One bit of rubbish in the recycling makes it all rubbish.  
Your individual actions matter.



## Reuse

The University has a reuse platform through which departments and colleges can share and rehome otherwise unwanted items across the collegiate University.

The system allows staff to:

- avoid purchase costs
- avoid disposal costs
- save time
- help the University reduce its environmental impact

Staff can sign up here:

[www.warp-it.co.uk/oxforduniversity](http://www.warp-it.co.uk/oxforduniversity)

The system is not for personal items or use.



Brilliant service, very innovative idea, my department has benefitted.



## Recycling colour key



Dry Mixed Recycling (DMR)



Glass



Food



General/residual waste

## Recycling

### Dry Mixed Recycling (DMR)

A dry mixed recycling container is for clean:

- ✓ paper and cardboard
- ✓ drinks cans and food tins
- ✓ plastics bottles and containers: types 1 (PET), 2 (DPE), 3 (PVC), 5 (PP), 6 (PS).

Material is sent to a materials recovery facility for separation before being baled and sent for recycling.

- ✗ no glass
- ✗ no black food trays
- ✗ no liquid or food
- ✗ no tissues or paper towels



Non-hazardous waste posters, stickers, A-Z, FAQs, procedures and training available from:

[www.ox.ac.uk/estates/ourservices/environment](http://www.ox.ac.uk/estates/ourservices/environment)

### Glass

A glass recycling container is for:

- ✓ glass bottles (all colours)
- ✓ glass jars (without lids)
- ✓ glassware

Material is sent for re-melt.

- ✗ heat proof glass (eg Pyrex) cannot be recycled

### Food

Left-over food, preparation scraps and out-of-date food can all be segregated for recycling.

A food waste recycling container is for:

- ✓ Left-over food and peelings
- ✓ tea bags and coffee grounds
- ✓ meat and fish (raw or cooked)

Material is sent to anaerobic digestion to generate energy and produce soil improver.

- ✗ no food in packaging
- ✗ no bio-degradable packaging

### General

The aim is to place as little waste in this container as possible.

A general waste container is for:

- ✓ expanded polystyrene
- ✓ plastic bags and wrappers
- ✓ unknown plastics
- ✓ tissues and hand towels
- ✓ textiles and wood
- ✓ food waste (if no separate collection)
- ✓ glass (if no separate collection)

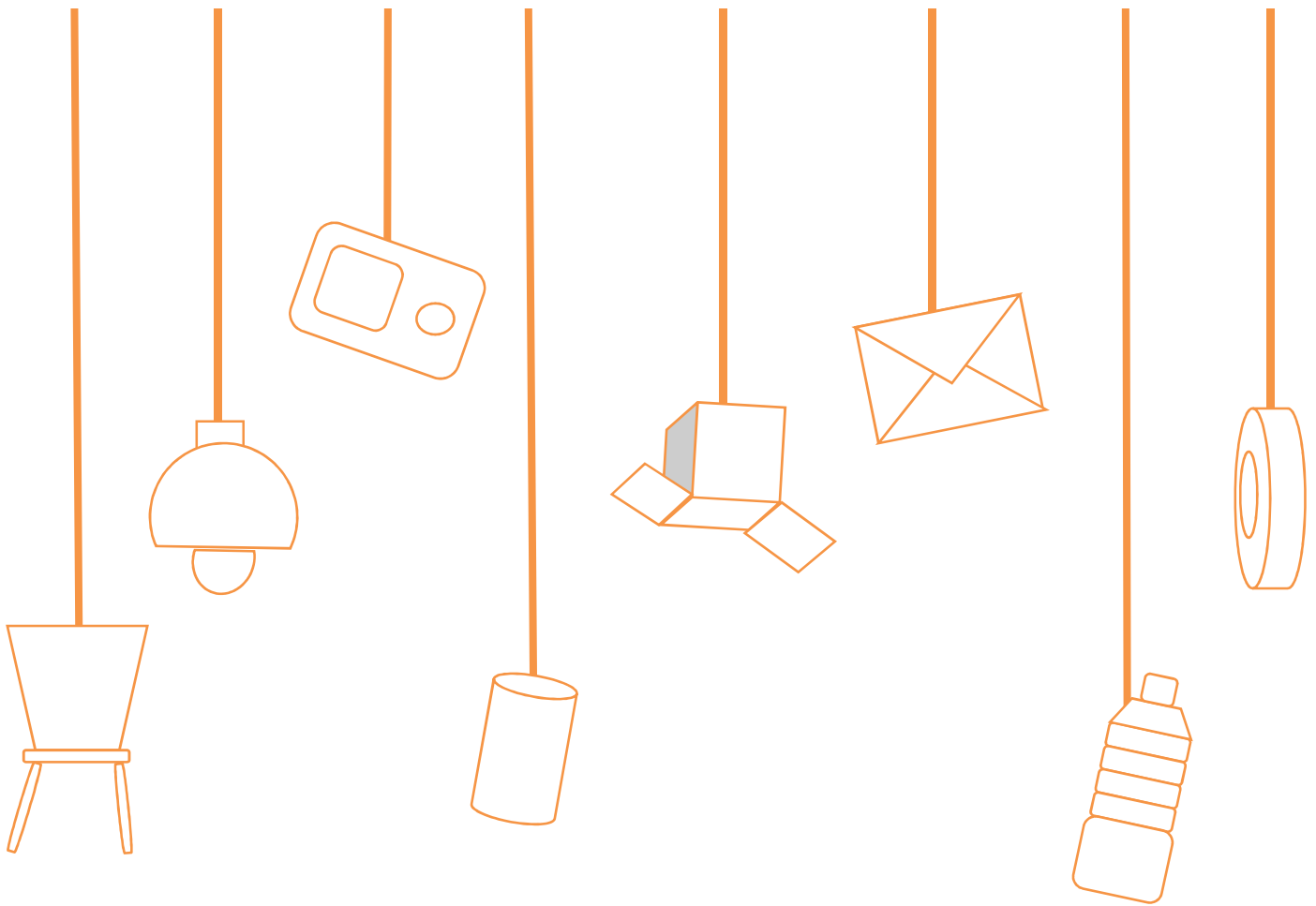
Material is sent for recovery at an energy from waste plant.

**The following items may not be placed in the waste streams outlined above and must be disposed of separately.**

- electrical waste eg lights, IT equipment and cable
- batteries
- liquid waste
- bulky waste or very heavy waste
- hazardous wastes



For materials not listed above please visit our waste A-Z available at [www.ox.ac.uk/estates/environment](http://www.ox.ac.uk/estates/environment)



## Contact information:

For general non-hazardous waste management queries at Oxford University and for WARPit, contact the Environmental Sustainability team



wastemanagement@admin.ox.ac.uk  
www.ox.ac.uk/estates/ourservices/environment  
01865 614893  
@OxfordEnvSust

To arrange a collection or discuss your recycling streams on site contact Select Environmental on:



oxford@selectenviro.co.uk  
www.selectenviro.co.uk  
0118 975 9000

**For accessible versions of this guide, including an audio guide, please email [sustainability@admin.ox.ac.uk](mailto:sustainability@admin.ox.ac.uk).**

For materials not listed above please visit our waste A-Z available at [www.ox.ac.uk/estates/environment](http://www.ox.ac.uk/estates/environment)